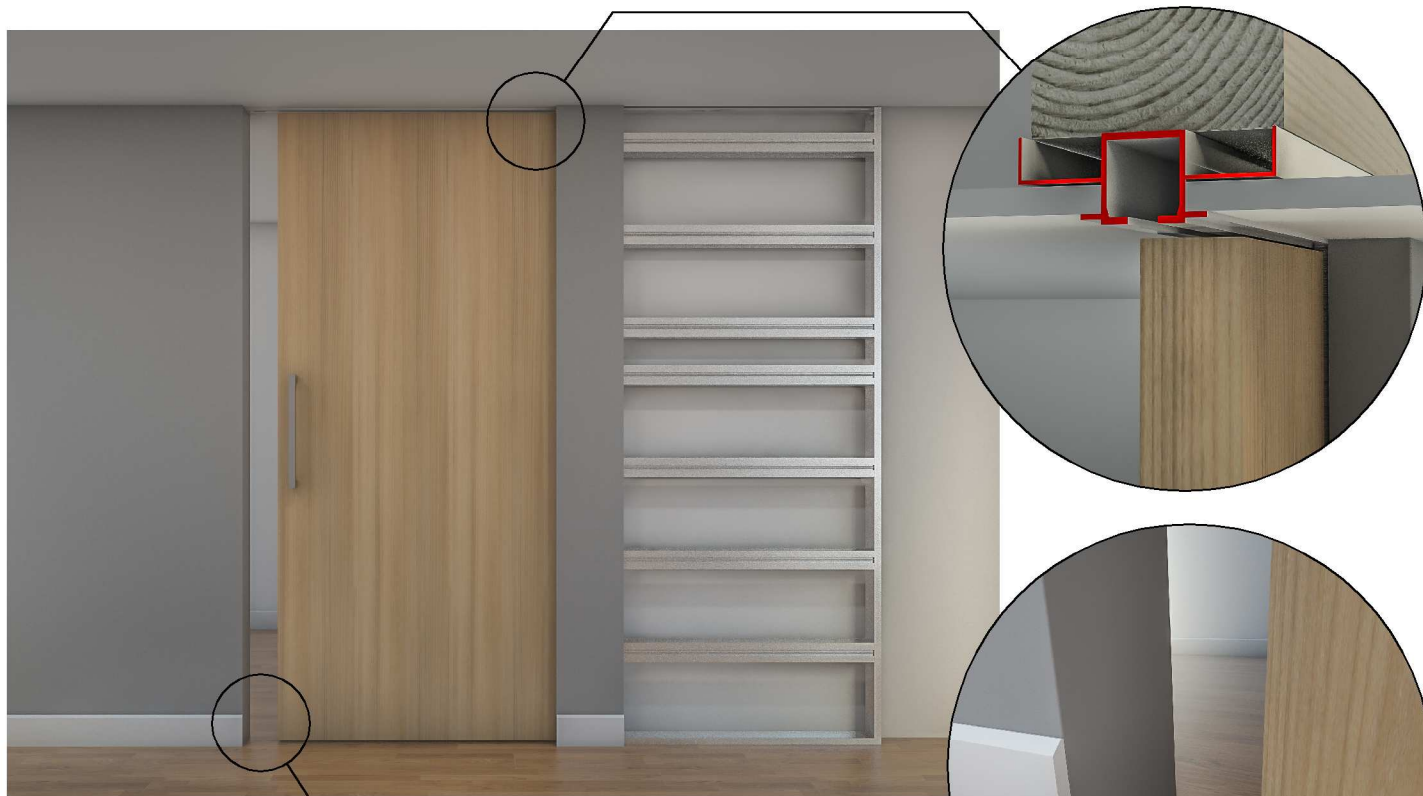
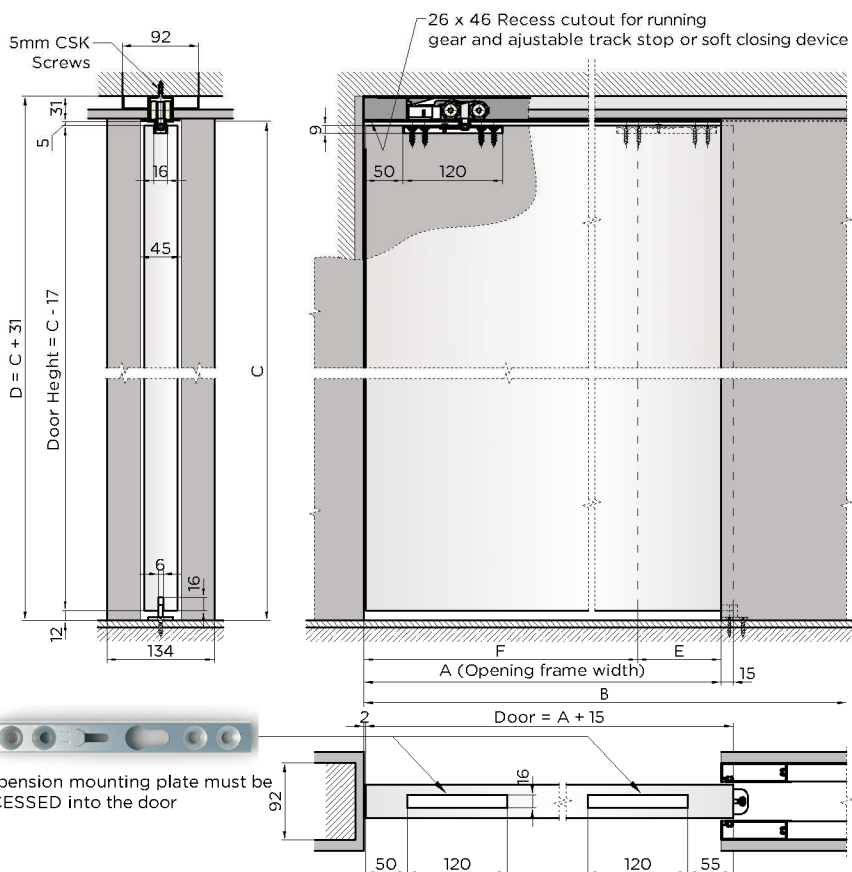


Single Cavity Slider - Timber Door

Flush Setting Track Square Set



- A - Opening frame width.
- B - Overall frame size.
- C - Distance from finished floor to underside of track.
- D - Distance from finished floor to underside of support beam.
- E - Projection of door from cavity.
- F - Clear opening width.



Tornex offers the ultimate sliding door system, manufactured to the highest quality standards and utilizing a premium nylon sealed ball bearing system to ensure quiet and smooth running action.

With a contemporary aesthetic design that simply looks sensational, Tornex cavity sliders provide a functional, space saving solution to cater for almost every application and design preference.

Key Features

- Custom made, pre-assembled for quick and easy installation.
- Full aluminium frames of solid design, corrosion resistant, ideal for wet areas and both domestic and commercial applications.
- Slim line top track (31mm) - minimal installation height - flush ceiling setting
- Plasterboard (10 or 13mm) fits neatly behind architrave trims.
- Premium nylon sealed ball bearing rollers ensure smooth and quiet running action, suitable for coastal applications.
- Sliding door hardware is pre-installed and pre-set.
- Options: Soft closing, brush seals.